



The perfect holiday **home from home**

Take a look at our exciting new range of holiday homes for 2020

Welcome

to the 2020 range of Delta Holiday Homes

Our philosophy at Delta is to give our customers what they want, when they want it, at an affordable price.

This year we have added four new additions to the range. The "Countryside Executive" and the "Countryside Deluxe" are the first two, both being a modern styled holiday home with great use of space and light to give a comfortable homely feel. With a country style range oven and fully equipped with a variety of appliances, this truly is a touch of genius in holiday home design. If you're looking for comfort levels at the highest standards. The Countryside Executive has the addition of being built to fully residential specifications, (BS3632) a must for anyone to view.

The Langford is the third addition to our brochure range. With a very light and airy feel to the lounge and kitchen area you feel like you're sitting at home with no compromising on space, and all at amazing value for money.

The fourth addition is the "Sienna" a mid-range model created to give a value for money holiday home with a feeling of style and comfort, with free standing dining table and chairs and fixed sculptured seating with lots of storage the Sienna will be a winner for all families looking for the perfect holiday home. The Sienna even comes with a bath option for anyone wishing for that added luxury.

The Superior is still a very popular model within the Delta range with a touch of luxury with many extras all built into an affordable price. The Superior shows that a design can work year after year with very little changes.

The whole Delta range for 2020 has been created for customers to enjoy quality at an affordable price and give Delta Caravans a range to be proud of.



Contents

Countryside Executive

4



Countryside Deluxe

6



Superior Deluxe

8



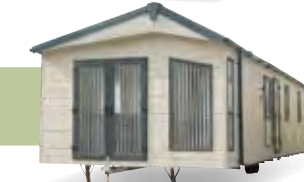
Superior

10



Hadley

12



Thornbury

14



Langford

16



Sienna

18



Bromley Deluxe

20



Bromley

22



Resort Plus

24



Santana

26



Countryside Executive



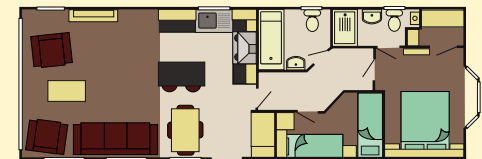
The Countryside Executive is a new addition for the 2020 season, based on the Countryside Deluxe but upgraded to full residential specification (BS3632). This luxury home features include double opening patio doors with a full glass front which gives you easy access to your front decking and full frontal panoramic views. This luxury home is genius in its design with optimised space and use of lighting to create a luxury feel that is guaranteed to make you feel special. Fully equipped with many integrated appliances and an American style fridge freezer the Countryside Executive leaves you wanting for nothing. The bathroom has a full size bath with a shower. The spacious main bedroom also features its very own shower room and a walk in wardrobe.



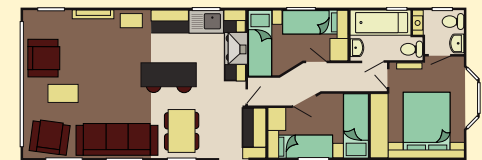


STANDARD FEATURES

- Built to full residential specification (BS3632)
- UPVC double glazed windows and door/s
- Gas combi central heating system
- Steel pantile roof
- Canexel cladding to the exterior
- Lagged pipes
- Exterior light
- Feature fireplace with TV points and HDMI connections
- Dining table & chairs
- Gas/electric range oven
- Stainless steel cooker hood
- Integrated dishwasher
- Integrated washer dryer
- Inbuilt microwave
- American style fridge freezer
- Inbuilt wine cooler
- Bluetooth inbuilt speakers in the lounge
- Domestic interior doors
- Gas ram bed with under bed storage to main bedroom
- Foldout bed to lounge seating
- Vaulted ceiling throughout
- Thermostatic shower mixer
- Pre galvanised I beam chassis



41 x 14'6" 2 Bed



41 x 14'6" 3 Bed



Countryside Deluxe



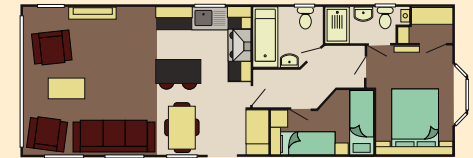
The Countryside Deluxe is a new addition for the 2020 season with many features including a double opening patio door with a full glass front which gives you easy access to your front decking and full frontal panoramic views. This holiday home is genius in its design with optimised space and use of lighting to create a luxury feel that is guaranteed to make you feel special. Fully equipped with many integrated appliances and an American style fridge freezer the Countryside Deluxe leaves you wanting for nothing. The bathroom has a full size bath with a shower. The spacious main bedroom also features its very own shower room and a walk in wardrobe. If you require spoiling with your new holiday home the Countryside Deluxe is the home to view.



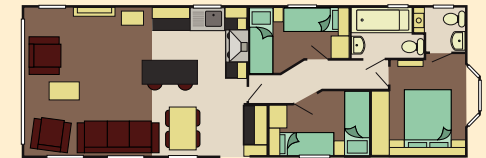


STANDARD FEATURES

- UPVC double glazed windows and door/s
- Gas combi central heating system
- Steel pantile roof
- PVC cladding to the exterior
- Lagged pipes
- Exterior light
- Feature fireplace with TV points and HDMI connections
- Dining table & chairs
- Gas/electric range oven
- Stainless steel cooker hood
- Integrated dishwasher
- Integrated washer dryer
- Inbuilt microwave
- American style fridge freezer
- Inbuilt wine cooler
- Bluetooth inbuilt speakers in the lounge
- Domestic interior doors
- Gas ram bed with under bed storage to main bedroom
- Foldout bed to lounge seating
- Vaulted ceiling throughout
- Thermostatic shower mixer
- Pre galvanised chassis



40 x 14 2 Bed



41 x 14 3 Bed



Superior Deluxe



The Superior Deluxe features a double opening patio door with a full glass front which gives you easy access to your front decking and full frontal panoramic views. This holiday home is genius in its design with optimised space and use of lighting to create a luxury feel that is guaranteed to make you feel special. Fully equipped with many integrated appliances and an American style fridge freezer the Superior Deluxe leaves you wanting for nothing. The bathroom has a full size bath with a shower. The spacious main bedroom also features its very own shower room and a walk in wardrobe.

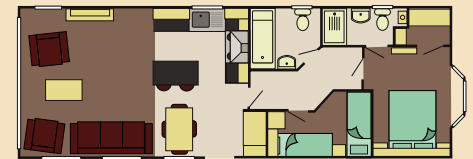
If you require spoiling with your new holiday home the Superior Deluxe is the home to view.



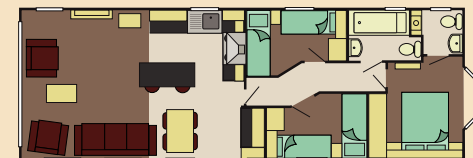


STANDARD FEATURES

- UPVC double glazed windows and door/s
- Gas combi central heating system
- Steel pantile roof
- PVC cladding to the exterior
- Lagged pipes
- Exterior light
- Feature fireplace with tv points and HDMI connections
- Dining table & chairs
- Gas/electric range oven
- Stainless steel cooker hood
- Integrated dishwasher
- Integrated washer dryer
- Inbuilt microwave
- American style fridge freezer
- Inbuilt wine cooler
- Bluetooth inbuilt speakers in the lounge
- Domestic interior doors
- Gas ram bed with under bed storage to main bedroom
- Foldout bed to lounge seating
- Vaulted ceiling throughout
- Thermostatic shower mixer
- Pre galvanised chassis



40 x 14 2 Bed



41 x 14 3 Bed



Superior



The Superior features a double sliding patio door within a full glass front which gives you direct access to your own deck. The living room is wonderfully inviting, with comfortable seating incorporating a fold out occasional bed and co-ordinated scatter cushions. The bedrooms, include plush headboards and co-ordinated curtains. The modern stylish kitchen has high gloss doors with under unit lighting with many integrated appliances and an American style fridge freezer.

The Superior has a light and spacious bathroom with a shower above the bath plus a second shower room featuring a large shower enclosure; both include mirrored cabinets and dual flush toilets.

If you are after a holiday home that has everything the Superior is holiday home to view.





STANDARD FEATURES

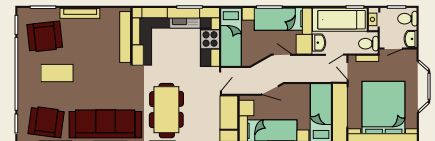
- UPVC double glazed windows and door/s
- Gas combi central heating system
- Steel pantile roof
- PVC cladding to the exterior
- Lagged pipes
- Exterior light
- Feature fireplace with tv points and twin HDMI connections
- Dining table & chairs
- Gas oven & hob
- Stainless steel cooker hood
- Integrated dishwasher
- Integrated washer dryer
- Inbuilt microwave
- American style fridge freezer
- Domestic interior doors
- Gas ram bed with under bed storage to main bedroom
- Foldout bed to lounge seating
- Vaulted ceiling throughout
- Thermostatic shower mixer

OPTIONAL FEATURES

- Pre galvanised chassis



40 x 13 2 Bed



41 x 14 3 Bed



41 x 14 2 Bed C/L



Hadley



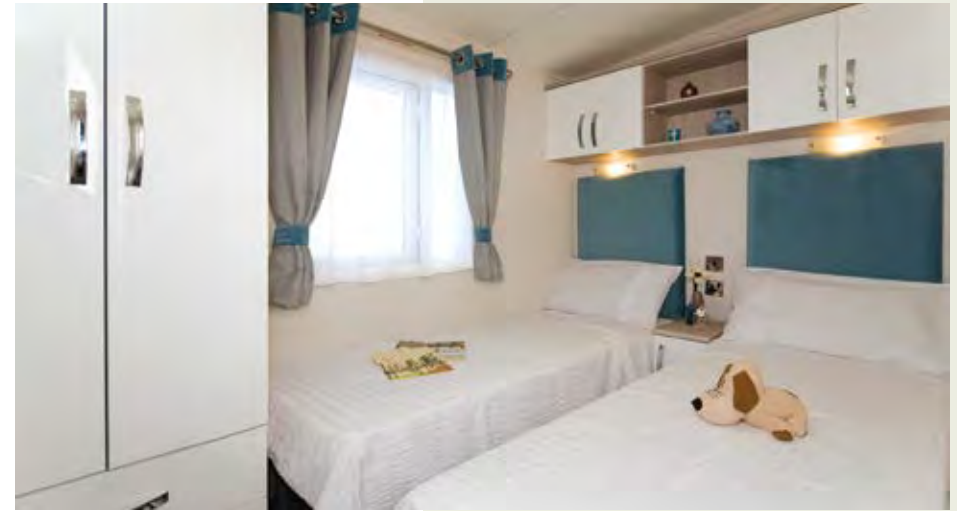
The Hadley with an inviting open plan lounge with outlook front doors gives the holiday home owner everything needed from a quality holiday home.

There is a large 'L' shape suite incorporating a fold out occasional bed and co-ordinated scatter cushions. The bedrooms include plush curtains and headboards , modern furniture design with a high gloss finish.

The Kitchen with its high gloss finish and matching black appliances gives a modern look with a great amount of cooking space.

The Hadley with the unique modern design will bring the modern home into your holiday home and at an affordable price.





STANDARD FEATURES

- Spacious living area
- Light and airy feel
- Feature tv unit with extra storage
- Large comfortable 'L' shape seating lounge
- Fold out bed for extra sleeping accommodation
- Feature lighting to lounge and master bedroom
- Stylish high gloss kitchen
- Steel pantile roof
- Upvc double glazed throughout
- Gas combi central heating
- Vaulted ceiling throughout
- Mirror to the lounge area
- Exterior light
- Domestic interior doors

OPTIONAL FEATURES

- Pre galvanised chassis



40 x 12'6 2 Bed



41 x 12'6 3 Bed

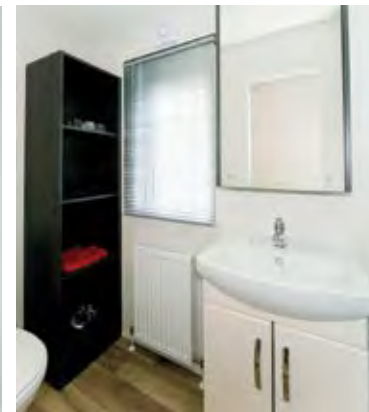
Thornbury



The Thornbury has a modern look, with graphite windows making this home look warm and comforting, making a perfect family holiday.

The living room is extremely welcoming and spacious with a modernised colour scheme with comfortable seating with matching scatter cushions and a feature fireplace. The kitchen and dining room are well laid out and fully equipped giving you plenty of storage room, the master bedroom has two double wardrobes and two drawers in each, it also has a vanity table and mirror with two bedside tables and overhead storage, along with having calming and relaxing colours giving you the perfect night's sleep. This model has a spacious family bathroom with storage facilities big enough for everyone.





STANDARD FEATURES

- UPVC double glazed windows and door/s
- Gas combi central heating
- Extra insulation
- Steel pantile roof
- PVC cladding
- Lagged pipes
- Exterior light
- Feature fireplace
- Dining table and chairs
- Gas oven & hob
- Black cookerhood
- Integrated fridge freezer
- Kitchen glass display cabinets
- Domestic interior doors
- Gas ram bed with underbed storage to main bedroom
- Foldout bed to lounge seating
- Vaulted ceiling throughout
- Thermostatic shower mixer

OPTIONAL FEATURES

- Pre galvanised chassis



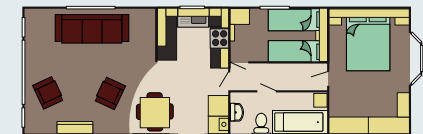
35 x 12 2 Bed



33 x 13 2 Bed



35 x 13 2 Bed



40 x 13 2 Bed



41 x 13 3 Bed



Langford



The Langford is nothing less than a home from home, designed to give you the feeling of space with a modern feel. The Langford has many great features as standard including a full size bath with a shower above, 70/30 fridge freezer and a large u-shaped kitchen with an option to add a washer dryer or dishwasher if required. The main bedroom is spacious with plenty of wardrobe and drawer space to fit in all those extra holiday clothes. The Langford is a holiday home that won't disappoint you for value without sacrificing quality and style.





STANDARD FEATURES

- UPVC double glazed windows and door/s
- Gas combi central heating
- Steel pantile roof
- PVC cladding
- Lagged pipes
- Exterior light
- Feature fireplace
- Dining table and chairs
- Gas oven & hob
- Stainless steel cookerhood
- Built in 70/30 fridge freezer
- Domestic interior doors
- Foldout bed to lounge seating
- Vaulted ceiling throughout
- Thermostatic shower mixer

OPTIONAL FEATURES

- Pre galvanised chassis



40 x 13 2 Bed



41 x 13 3 Bed

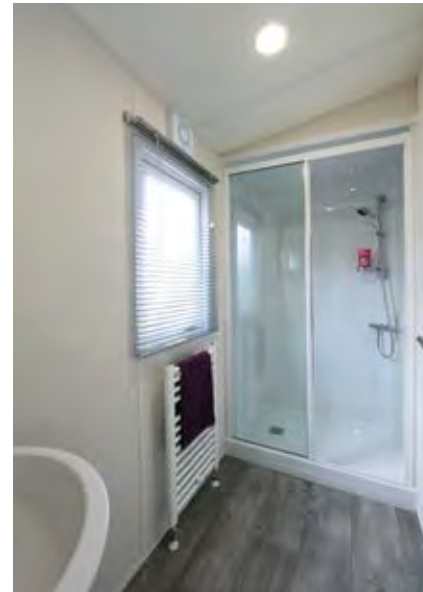


Sienna



Contemporary styling has been used to create this affordable stylish holiday home. Comfort and thoughtful design have produced a competitively price holiday home packed with features. Natural colours to the lounge give a bright fresh look, the design works well throughout and the space has been maximised to its best potential. A well laid out kitchen works well creating harmony with the dining area. The Sienna is an ideal holiday home, guaranteed to exceed your expectations.





STANDARD FEATURES

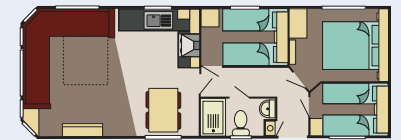
- Spacious living area
- UPVC double glazed windows and door/s
- Gas central heating
- Steel pantile pitched roof
- Woodgrain alloy exterior
- Domestic interior doors and handles
- Exterior light
- Lagged pipes
- Large fixed seating area
- Electric fire to lounge
- Dining table and 4 chairs
- Gas cooker
- Integrated fridge freezer
- Modern shower room with wall cabinet

OPTIONAL FEATURES

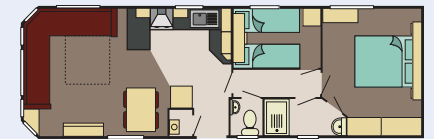
- Pre galvanised chassis



32 x 12 2 Bed



32 x 12 3 Bed



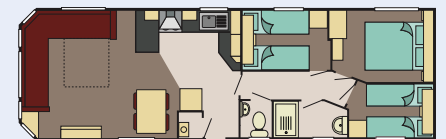
35 x 12 2 Bed



36 x 12 2 Bed (bath option)



36 x 12 3 Bed (bath option)



36 x 12 3 Bed



Bromley Deluxe



The Bromley Deluxe is comfortable and spacious, the modern styling and fabrics give this holiday home a welcoming appeal, an ideal family holiday home. The modern fitted kitchen with full oven and grill allow easy transfer to the spacious dinette style eating area. This spacious layout will give you the space needed for that perfect large family break away, so just relax and enjoy the comfort.



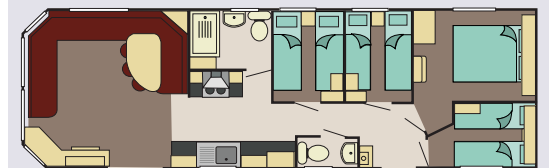


STANDARD FEATURES

- Steel pantile pitched roof
- UPVC double glazing
- Exterior light
- Vaulted ceilings throughout
- Domestic interior doors
- Lagged pipes
- Feature electric fire
- Gas oven and grill
- Microwave space
- Spacious shower
- Thermostatic shower mixer
- Stainless steel canopy cooker hood
- Gas central heating

OPTIONAL FEATURES

- Extra insulation
- Pre galvanised chassis

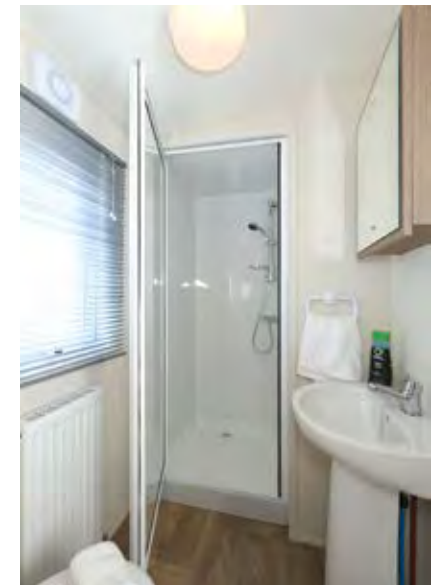


39 x 12 4 Bed

Bromley



The Bromley is an ideal holiday home for those looking for excellent value for money, but who do not want to compromise on comfort or styling. The Bromley is a spacious family holiday home with comfort and styling in mind. Modern natural colours give a fresh look, whilst spacious lounge seating, a well laid out dining area and plenty of storage are but some of the practical ideas included in this model. An attractive pantiled roof is offered as standard.





23 x 10 1 Bed



26 x 10 1 Bed



26 x 10 2 Bed



28 x 10 2 Bed



30 x 10 2 Bed



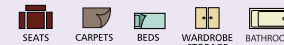
32 x 10 2 Bed



35 x 10 2 Bed



35 x 10 3 Bed



24 x 12 2 Bed



28 x 12 2 Bed



32 x 12 2 Bed



35 x 12 2 Bed



35 x 12 3 Bed

STANDARD FEATURES

- UPVC double glazing
- PVC cladding
- Steel pantile pitched roof
- Vaulted ceiling throughout
- Domestic interior doors and handles
- Lagged pipes
- Lounge seating fold out bed
- Electric fire
- Dinette seating area
- Gas cooker with grill
- Space for microwave
- Space for fridge / freezer
- Ample bedroom storage
- Modern shower room
- Thermostatic shower mixer

OPTIONAL FEATURES

- Pre galvanised chassis

Resort Plus



The Resort Plus has a level of practicality with a spacious well thought out design meant to meet the needs of the family holiday or the weekend getaway. The large seating area is more than ample for family and friends to relax. All the seating has under seat storage and includes an occasional bed.

The Resort Plus features a fixed separate dining area with 2 stools. The Kitchen area is very practical with plenty of worktop space , plenty of storage and a wide walkway.

The bedrooms follow the theme with useful storage and a soft colour scheme to give a comfortable relaxing environment.

The Resort Plus comes with a full winter pack as standard and is a surprise for anyone looking for an affordable starter holiday home at exceptional value.



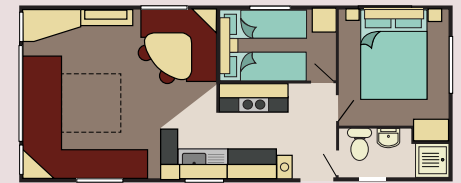


STANDARD FEATURES

- UPVC double glazed windows and door/s
- Gas central heating
- Extra insulation (rock wool)
- Steel pantile pitched roof
- Vaulted ceiling
- Domestic interior doors and handles
- Exterior light
- Lagged pipes
- Electric fire to lounge
- Gas cooker
- Modern shower room with wall cabinet

OPTIONAL FEATURES

- Pre galvanised chassis



29 x 12 2 Bed



32 x 12 2 Bed



35 x 12 2 Bed



35 x 12 3 Bed

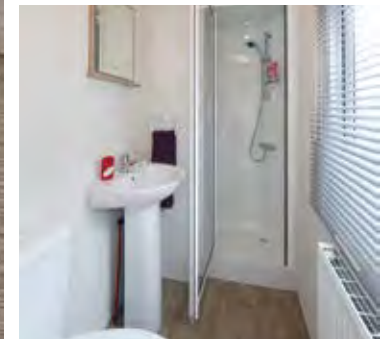


Santana



The Santana has bright modern attractive fabrics with comfort and design producing the perfect family holiday home. This is the ideal model for first time holiday home buyers who are looking for outstanding value for money alongside spacious practical open plan living.





STANDARD FEATURES

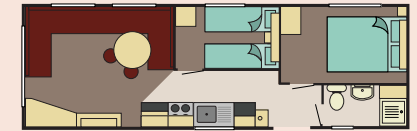
- UPVC single glazed windows and door/s
- Vaulted ceiling throughout
- Lagged pipes
- Electric fire
- Wrap around spacious lounge seating
- Dinette seating area
- Gas cooker with grill
- Space for microwave
- Space for fridge/ freezer
- Ample bedroom storage
- Modern shower room
- Thermostatic shower mixer
- Fold out bed to lounge seating
- Steel pantile pitched roof

OPTIONAL FEATURES

- Pre galvanised chassis
- Double glazed windows and door/s
- Gas central heating or electric panel heaters
- Extra insulation
- Fridge or mini fridge freezer



28 x 10 2 Bed



30 x 10 2 Bed



32 x 10 2 Bed



35 x 10 2 Bed



35 x 10 3 Bed



35 x 12 2 Bed



35 x 12 3 Bed



Quality caravans for all seasons

When buying a caravan from Delta you can be confident in the knowledge that it has been designed by talented designers at the forefront of their industry and built by time served craftsmen using state of the art equipment and the highest quality materials. Delta Caravans are built with pride, skill and innovation, they are made to last and truly are caravans for all seasons.

Dealer



DELTA CARAVANS International Ltd.,
240 Leads Road, Hull, East Riding of Yorkshire, HU7 0DF
Tel: (01482) 788088 Fax: (01482) 788090
Email: info@deltacaravans.co.uk
www.deltacaravans.co.uk

Whilst all the information contained in this leaflet is correct at the time of printing, it may be that because of the use of alternative materials or the shortage of supplies, alterations may have to be made to the models in this leaflet. Particulars of any changes may be obtained from your caravan dealer. All colours have been matched as close as printing techniques allow, slight variations may occur when compared to the actual fabrics.

Televisions, videos and other props are purely for display purposes only and not included with the caravan.